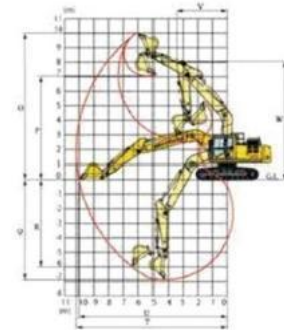
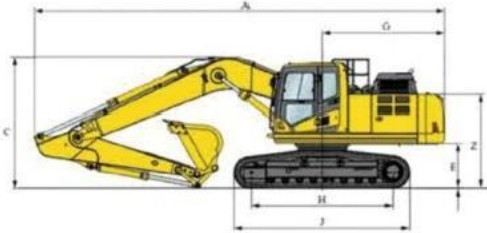
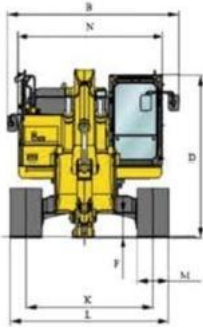




ME. 9 系列液压挖掘机

ME220.9

重量(T)	22
铲斗容量(m ³)	1.0-1.35
功率(kw/r/min)	133/2000



性能参数

机型Model	ME220.9
重量(T) Total weight(T)	22
铲斗容量(m ³) Bucket capacity(m ³)	1.0-1.35
发动机型号Engine model	ISUZU 4HK1X
功率(kw/r/min) Power(kw/r/min)	133/2000
燃油箱容积(L) Volume of fuel tank (L)	350
行走速度(km/h) Traveling speed (km/h).	5.2/3.5
回转速度(r/min) Slew speed (r/min)	11.5
爬坡能力(%) Gradeability(%)	70
铲斗挖掘力(KN) ISO Bucket excavating force (KN) ISO	145
斗杆长度(mm) Bucket rod length(m)	2900
动臂长度(mm) Length of swing arm (m)	5700
接地比压(KPa) Ground pressure(KPa)	46.5
液压油箱容积(L) Hydraulic oil tank volume (L)	246

整机尺寸

机型Model	ME220.9
A-总长(mm) Overall length (mm)	9560
B-总宽(mm) Overall width (mm)	2980
C-总高(动臂顶)(mm) Total height (Swing arm top) (mm)	3040
D-总高(驾驶顶)(mm) Total height (Cab roof) (mm)	3120
E-配重离地间隙(mm) Counterweight ground clearance (mm)	1065
F-最小离地间隙(mm) Min. ground clearance(mm)	466
G-尾部回转半径(mm) Turning radius of vehicle tail(mm)	2720
H-履带接地长度(mm) Ground contact length of track(mm)	3445
J-履带长度(mm) Track shoe length (mm)	4260
K-轨距(mm) Track gauge (mm)	2380
L-履带宽度(mm) Track shoe width (mm)	2980
M-履带板宽度(mm) Track shoe width(mm)	600
N-转台宽度(mm) Rotary table width(mm)	2700

作业范围

机型Model	ME220.9
O-最大挖掘高度(mm) Maximum excavating height(mm)	9275
P-最大卸载高度(mm) Maximum unloading height(mm)	6560
Q-最大挖掘深度(mm) Maximum excavating depth(mm)	6515
R-最大垂直壁挖掘深度(mm) Maximum vertical wall excavating depth(mm)	5915
T-最大挖掘距离 Maximum excavating distance	9865
U-在地平面的最大挖掘距离(mm) Maximum excavating distance at ground level(mm)	9680
V-最小回转半径(mm) Minimum turning radius(mm)	3630
W-最小回转半径时最大高度(mm) Maximum height at minimum turning radius(mm)	7670
X-回转中心至后端部的距离(mm) Distance between the center of gyration and the rear end side(mm)	2720
Z-配重高度(mm) Counterweight height(mm)	2120
A1-接地长度(运输时)(mm) Ground contact length(during transportation) (mm)	4840

注：随技术不断改进，参数会有所变动，恕不通知，以实际样车为准。