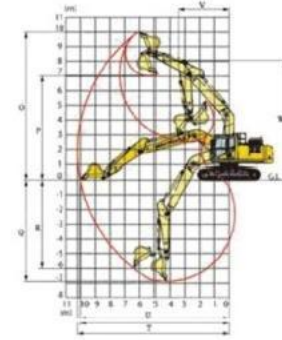
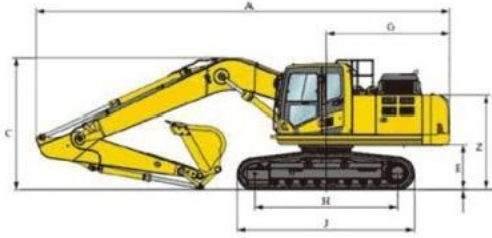
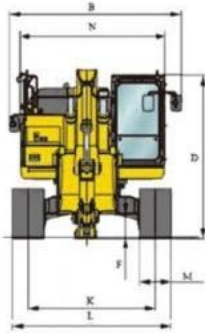




## ME.9 系列液压挖掘机

# ME520.9

重量(kg)	51500
发动机功率(kw/r/min)	300/1800
铲斗容量(m <sup>3</sup> )	2.8~3.2



## 性能参数

机型 Model	ME520.9
重量(KG) Total weight (KG)	51500
铲斗容量(m <sup>3</sup> ) Bucket capacity(m <sup>3</sup> )	2.8~3.2
发动机型号 Engine model	五十铃6WG1
功率(kw/r/min) Power(kw/r/min)	300/1800
燃油箱容积(L) Volume of fuel tank (L)	650
行走速度(km/h) Traveling speed (km/h).	4.8/3.0
回转速度(r/min) Slew speed(r/min)	8.6
爬坡能力(%) Gradeability(%)	70
铲斗挖掘力(KN) ISO Bucket excavating force (KN) ISO	298
斗杆长度(mm) Bucket rod length(m)	2550
动臂长度(mm) Length of swing arm(m)	6560
接地比压(KPa) Ground pressure(KPa)	86
液压油箱容积(L) Hydraulic oil tank volume (L)	335

## 整机尺寸

机型 Model	ME520.9
A-总长(mm) Overall length(mm)	11600
B-总宽(mm) Overall width(mm)	3340
C-总高(动臂顶)(mm) Total height(Swing arm top) (mm)	3640
D-总高(驾驶顶)(mm) Total height(Cab roof) (mm)	3280
E-配重离地间隙(mm) Counterweight ground clearance(mm)	1300
F-最小离地间隙(mm) Min. ground clearance(mm)	720
G-尾部回转半径(mm) Turning radius of vehicle tail(mm)	3845
H-履带接地长度(mm) Ground contact length of track(mm)	4360
J-履带长度(mm) Track shoe length(mm)	5390
K-轨距(mm) Track gauge(mm)	2740
L-履带宽度(mm) Track shoe width(mm)	3340
M-履带板宽度(mm) Track shoe width(mm)	600
N-转台宽度(mm) Rotary table width(mm)	3045

## 作业范围

机型 Model	ME520.9
O-最大挖掘高度(mm) Maximum excavating height(mm)	10000
P-最大卸载高度(mm) Maximum unloading height(mm)	6660
Q-最大挖掘深度(mm) Maximum excavating depth(mm)	6260
R-最大垂直壁挖掘深度(mm) Maximum vertical wall excavating depth(mm)	5620
T-最大挖掘距离 Maximum excavating distance	10580
U-在地平面的最大挖掘距离(mm) Maximum excavating distance at ground level (mm)	10360
V-最小回转半径(mm) Minimum turning radius(mm)	4825
W-最小回转半径时最大高度(mm) Maximum height at minimum turning radius (mm)	9250
X-回转中心至后端部的距离(mm) Distance between the center of gyration and the rear end side (mm)	3845
Z-配重高度(mm) Counterweight height(mm)	2860
A1-接地长度(运输时)(mm) Ground contact length(during transportation) (mm)	6520

注：随技术不断改进，参数会有所变动，恕不通知，以实际样车为准。